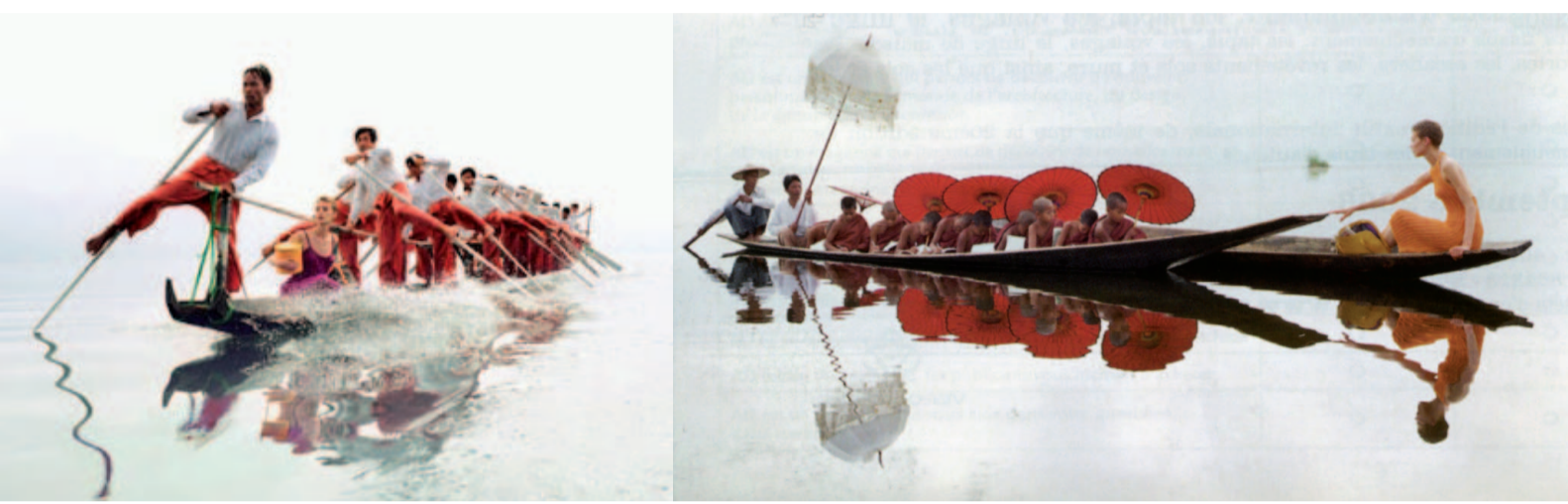


Brigitte Saby is a tireless discoverer who surfs the ever-shifting crest between Art and the decorative arts. Her inspiration is nourished by the ebb and flow between Past and Present, West and East, between the ephemeral and the intemporal, and between artistic tradition and creative buzz. But Brigitte Saby also likes to share her *coups de cœur*. This newsletter invites you into her world of perpetual movement...

Suspended Journeys

References / The Soul of Travel

Just before Fashion made its mark on traditional bags and suitcases under Marc Jacobs, Jean Larivière produced these supremely serene images for Vuitton's *Epi* series – photographed on the waters of Lake Inle in Burma.



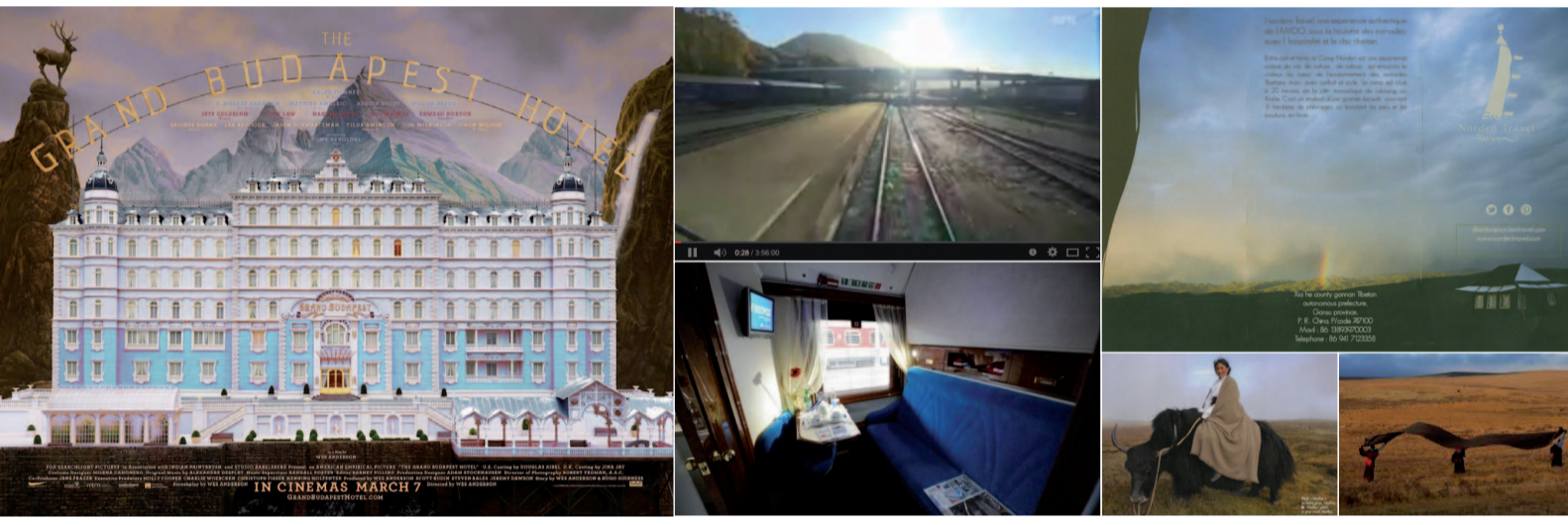
Jean Larivière for Louis Vuitton (1997)

International News / Trains & Treks

Leisurely progress could be this year's travel theme. Travellers, captivated by the charm of Ralph Fiennes, linger at Wes Anderson's *The Grand Budapest Hotel* as madcap stories unfurl around them. Trains are the heroes of two programmes on Slow TV, in Sweden and Japan, that consist of passing scenery filmed from the back of a train.

The *de luxe* St.-Petersburg – Nice rail link, relaunched in 2010, means Riviera aficionados can take their time getting there – three days, to be precise...

At this year's 1.618 *Sustainable Luxury* fair in Paris, Tibet was showcased via treks accompanied by nomads, and by *Norlha* yak's wool textiles – a sophisticated take on an age-old rustic product.



The Grand Budapest Hotel (reworked) - Slow TV Sweden - Train St Petersburg-Nice - Le Camp Norden & Norlha, luxury Yak's wool textiles (the latter two at Salon 1.618, Paris April 2014)

Journey through the World of Saby-Art Style: Scaling Celestial Peaks

Misty Peaks – the homes of spirits and the gods – are the favourite subject of Chinese paintings. The frail silhouettes stalking those hilltop paths have inspired Brigitte Saby's lamps and pouffes, with their gold paper highlights. Clouds enshrouding rocky summits veil her engraved glass screen with gypsum reliefs, and emerge from her knotted pouffes like invisible ink.



Left: *Ten Views of the Mont Wu* from the *Celestial Mountains* exhibition at the Grand Palais (2004)
Right: Designs by Brigitte Saby (photos Anaïs Wulf) - Screen (Brigitte Saby/Bernard Pictet) - Lantern (Brigitte Saby/Eliza Magri) - Pouffes (embroidery by Miguel Cisterna)

Paris News: The Mythical Orient Express

The locomotive from the Orient Express seems to have escaped from the Gare de Lyon, crossed the Seine, and ground to a halt in front of the Institut du Monde Arabe – with the bar, restaurant car and sleeping carriage immobilized in its wake.

An exhibition at the Institut describes every aspect of the mythical train conceived by a Belgian engineer.

Until 31 August 2014.



Artefact Décoration
3, avenue Victor Hugo
75116 Paris
tél +33 (0)1 40 67 96 06
fax + 33 (0)1 40 67 96 07
brigitte@brigitte-saby.com
www.brigitte-saby.com